

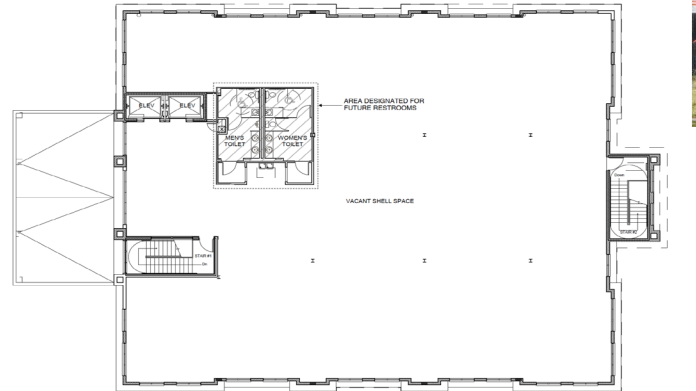
# New Medical Office Building

4602 N Armenia Ave, Tampa, FL 33603



## New Construction Office Building

- 3 Stories
- Single Tenant Floor Available
- Ideal for Medical Use
- Heavily Trafficked Location
- Less than 1 Mile from St. Joseph's, St. Joseph's Children's & St. Joseph's Women's Hospitals
- Free, Ample Parking at 6 Spaces Per 1,000 SF
- Covered Visitor Dropoff
- Located on Hart Bus route



9,413 Square Foot Floor Plan

## Demographics

- From W Tampa Bay Blvd to W Waters Ave on N Armenia Ave > 25,500
- From N Macdill Ave to N Armenia Ave on W Dr. MLK Jr Blvd > 32,500
- Households within 5 Miles > 129,000
- Population within 5 Miles > 317,000

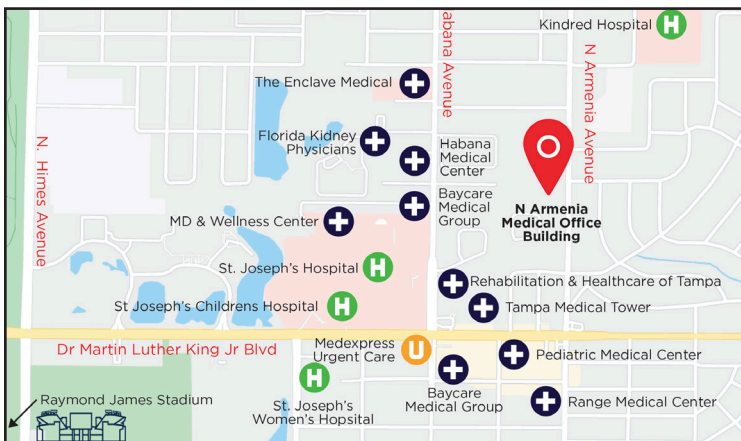
For more information, please contact:

**Angela Odell**

Managing Director

+1 813 514 2435

[angela.odell@cushwake.com](mailto:angela.odell@cushwake.com)



©2021 Cushman & Wakefield. All rights reserved. The information contained in this communication is strictly confidential. This information has been obtained from sources believed to be reliable but has not been verified. NO WARRANTY OR REPRESENTATION, EXPRESS OR IMPLIED, IS MADE AS TO THE CONDITION OF THE PROPERTY (OR PROPERTIES) REFERENCED HEREIN OR AS TO THE ACCURACY OR COMPLETENESS OF THE INFORMATION CONTAINED HEREIN, AND SAME IS SUBMITTED SUBJECT TO ERRORS, OMISSIONS, CHANGE OF PRICE, RENTAL OR OTHER CONDITIONS, WITHDRAWAL WITHOUT NOTICE, AND TO ANY SPECIAL LISTING CONDITIONS IMPOSED BY THE PROPERTY OWNER(S). ANY PROJECTIONS, OPINIONS OR ESTIMATES ARE SUBJECT TO UNCERTAINTY AND DO NOT SIGNIFY CURRENT OR FUTURE PROPERTY PERFORMANCE.



ACQUISITION • DEVELOPMENT • MANAGEMENT